

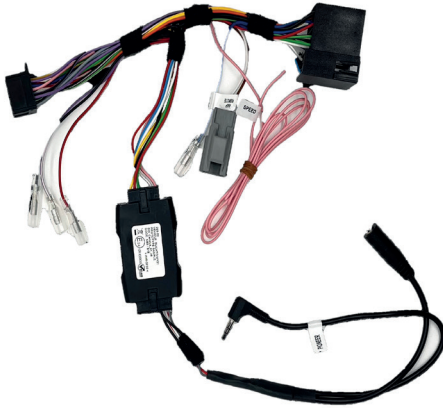
# Pioneer

## Installation guide for :

- SPH-EVO950DAB-D8
- SPH-EVO950DAB-C-D8



## Fiat Ducato 8 - model year '21 onwards Open dash only



Interface

Depending on the kit, the interface may look different



Pre-assembled SPH-EVO950DAB unit with  
Ducato 8 installation kit



Original dashboard setup  
Remove the two storage pockets



Remove the airvents left an right by pulling  
They are attached with two pins

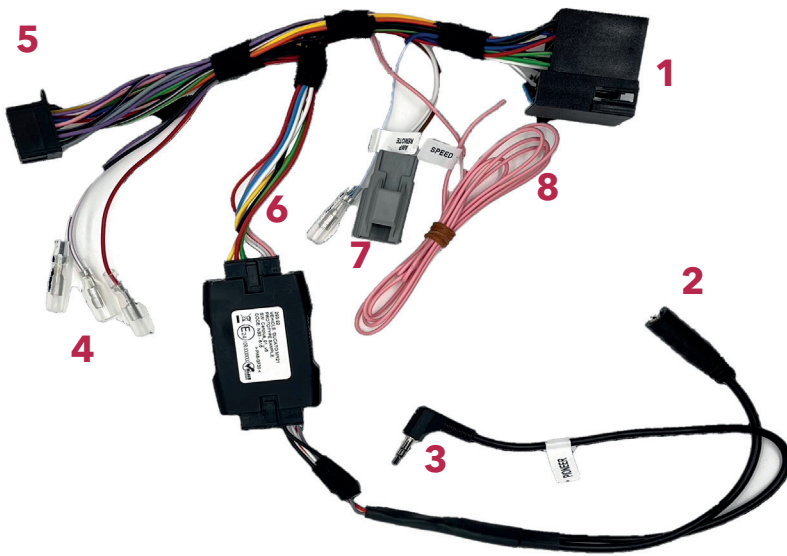


Remove four screws using a T20 screwdriver  
Keep them a side for later



Remove the original frame from the dashboard

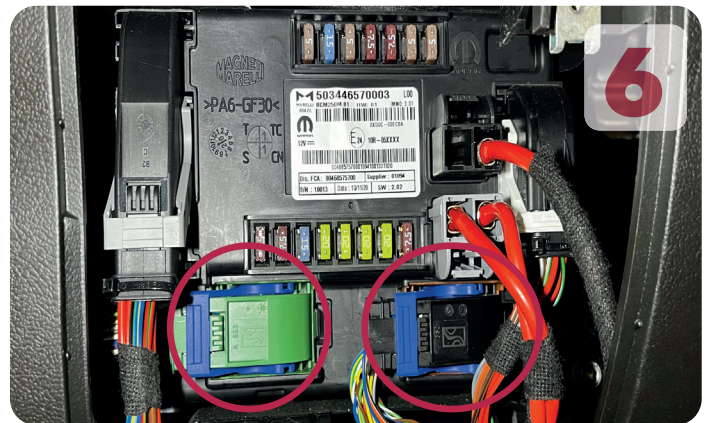
# Pioneer



- 1 - Connect to the vehicle main ISO cable
- 2 - Wired input for optional remote (CD-ME300 or similar)
- 3 - Steering wheel control input - Connect to backside of Pioneer head unit - Step 11
- 4 - Violet/White - Reverse gear input - Step 7/8  
Red - Optional 12v ACC supply  
Black - Optional GND supply
- 5 - Pioneer head unit main power connector
- 6 - Remote output for optional external amplifier
- 7 - Phone button control - See step 11/12
- 8 - Speed pulse wire - See step 9/10



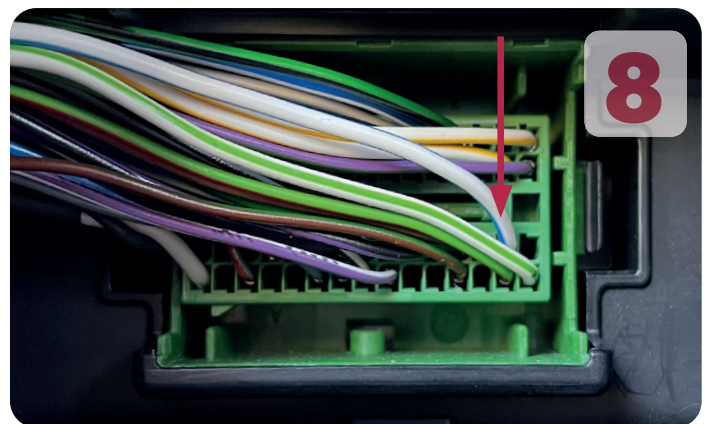
Open the fusebox underneath the steering column



Locate the green and black connector and remove them



Open the green connector and slide the cables out

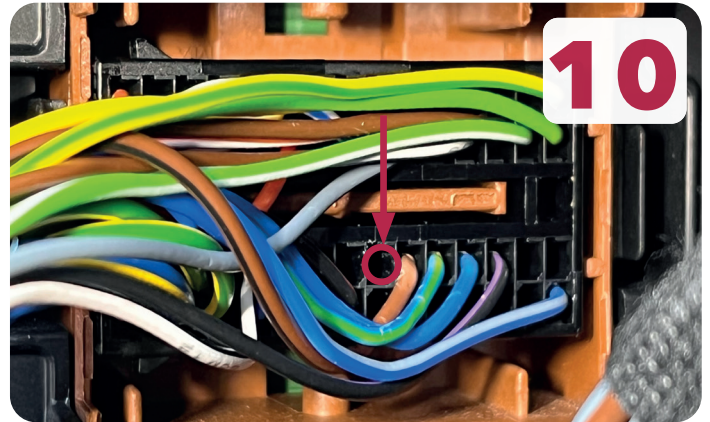


Connect the violet/white cable (reverse signal) to the white/blue cable in pin seventeen.

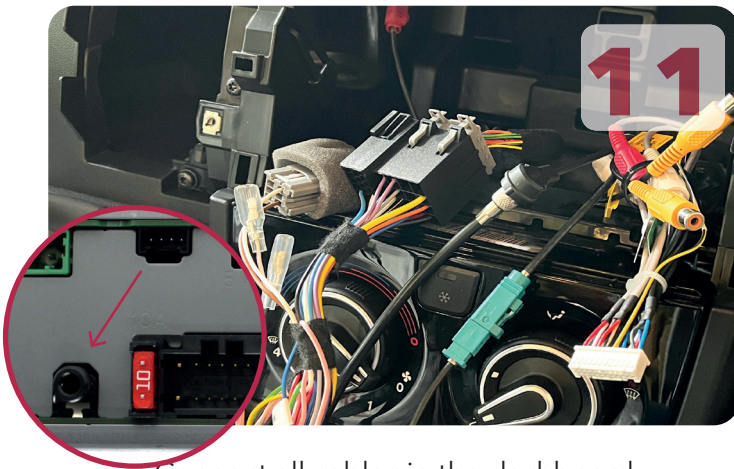
# Pioneer



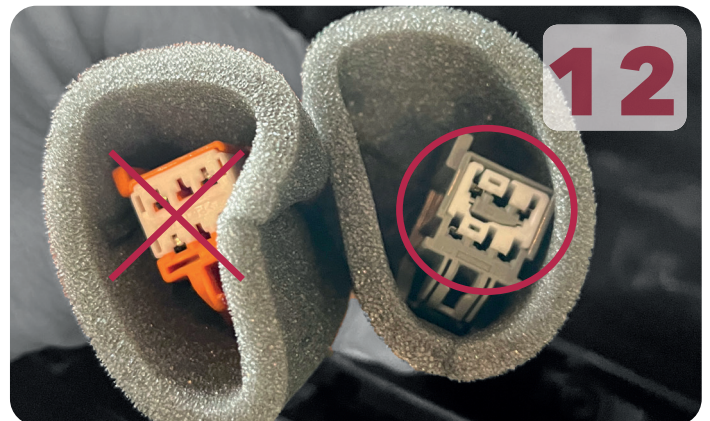
Open the black connector and slide the cables out



Insert the pink cable pin (speedpulse) to the open position twenty-two (22)



Connect all cables in the dashboard including FM & DAB with the included cables



For phone buttons only use the GREY connector.  
! DO NOT USE THE ORANGE CONNECTOR !



Insert the Pioneer head unit and secure with the original screws.



Re-install the airvents.