

DVR-F220

Dash Cam with Driver Assistance Functions



ALPINE DASH CAM

General Features

Specifications



Best Quality Drive Recording

The DVR-F220 records in 1080p Full HD with 30 frames per second and features the CMOS image sensor for great recording quality even at night. This allows you to record important details such as vehicle number plates to have a solid proof of events in a court of law. GPS geo-information and driving speed are recorded as well.



Wide Dynamic Range

Avoid overexposure in your Dash Cam footage when experiencing sources of bright light whilst driving, keeping your footage clearer. Wide Dynamic Range (WDR) is technology that allows the dashboard camera to capture a clearer image in a strongly contrasted environment. It can solve problems such as intense contrasts of light sources. In the event of a sudden change in frontal light exposure, such as when driving into or out of a tunnel or driving directly into bright sunshine, the Wide Dynamic Range function will eliminate excessively bright spots on the recordings.



Day and Night Vehicle Surveillance

The DVR-F220 includes a parking mode that keeps your car under surveillance even at night. If any impact by another car, bike, etc is noted, the camera will store this video footage and you can review it later to identify and prove what happened. The camera will notify you in the morning of any recorded incidences during the night.



Optimal image recording

CMOS image sensors enable constant HD recording in 1080p for the front and for the rear, as well as a 140-degree wide-angle view, both day and night. This minimizes blind spots to ensure that all events are recorded.



Traffic Incident Recording

After you enter your vehicle and start your engine, the dash cam will automatically start recording. Recorded videos are saved in one-minute segments with an auto-looping mechanism. In case of an accident, the Active Impact Monitoring System will automatically store the video data ten seconds prior to and after a collision registered by the 3-axis G-Sensor. The DVR-F220 comes with a 32 GB micro SD card.

General

- 1080p FULL HD (1920x1080p) video recording, 30 frames/sec., Video format H.264 / file: MP4
- 2 MP CMOS sensor for the highest image quality day & night
- Super Night Vision 1.0 technology
- Wide Dynamic Range – allows the dash-camera to capture a clearer image in a strongly contrasted environment
- Parking Surveillance Mode (Motion & Impact Detection, Time Lapse and Energy Saving Mode)
- Video storage in 60-second sequences
- Incidents/events are saved & pre-saved automatically or manually
- Settings and live view via dashcam smartphone app
- Warnings: speed cameras and red light cameras can be activated
- 3-axis accelerometer (3D, ± 3G) (5 levels of sensitivity adjustment)
- External GPS antenna input (recording GPS data & speed)*
- Built-In WIFI (WIFI streaming in real time on smartphone)
- Built-in speaker for voice guide (buzzer sounds)
- 1x V-IN (for extension camera)
- Power supply: DC 12 / 24 Volts supported

Recording Modes

- Continuous Rec. → Records videos in 1-minute segments (dual channels are supported for recording the front and rear view)
- Incident Rec. → Records 10 seconds before and after the incident (total 20 seconds)
- Manual Rec. → Records from 10 seconds before and 50 seconds after manually starting the recording (total 1 minute)
- Parking Rec. (parking mode) → Requires the hardwiring cable installation (Motion detec., Time lapse, Energy saving)

Specifications

- Angle of view: 140° (Diagonal)
- Power consumption: 2,3 W / 3,7 W (WIFI & GPS on) (1/2 CH)
- Camera size: 98,5 x 34 x 22 mm
- Weight : 54 g

Package Contents

- Main dash cam unit with mount
- Car charger with cigar jack (3,9 m) and hard-wire cable (3 m)
- Micro SD memory card (32 GB) with adapter (consumable) (up to 128 GB optionally possible)
- External GPS antenna
- Quick Start Guide



*External GPS antenna have to be connected

DVR-F220

Dash Cam with Driver Assistance Functions



ALPINE DASH CAM

Driver Assistance



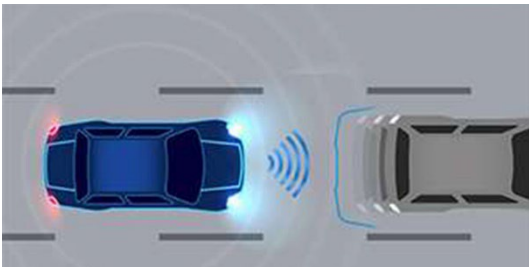
Lane Departure Warning System

Drowsy or distracted driving greatly increases the chance of an accident on the road. The Lane Departure Warning System will alert the driver when the vehicle goes off lane in a speed over 50 km/h.



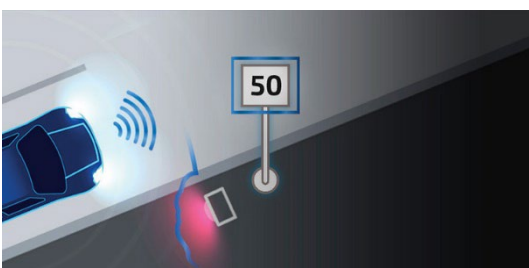
Forward Collision Warning System

Accidents can be avoided by maintaining a safe following distance. The Forward Collision Warning System calculates the real-time distance between your vehicle and the vehicle in front of you, while driving above 30 km/h in highways or under 30 km/h in a busy city and issues a 3-level early warning to the driver depending on the danger of collision.



Front Vehicle Departure Warning

When your car is stopped at an intersection or in traffic, the intelligent guidance system informs you that the vehicle in front has started to move, preventing a delayed response just in case you did not pay attention.



Speed Camera and Red-light Camera Alerts

You can download the speed camera database to receive in-time warnings when approaching speed cameras or red light cameras at intersections (legal operation of this function is subject to local traffic law).

DVR-F220

Dash Cam with Driver Assistance Functions



ALPINE DASH CAM

Driver Assistance



ENERGY SAVING MODE

Energy Saving Mode

Reduce power consumption and provides longer video recording than normal parking mode. When you are away from your car for an extended period of time, energy saving parking recording is a recommended solution. When in use, the device will go to sleep and after an impact has been detected by the built-in G-sensor, it will wake up within a second and start recording for the next 20 seconds.

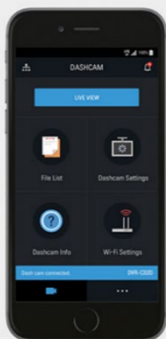
Dashcam Viewer



Alpine Dash Cam Viewer for PC / Mac

The intuitive and simple-to-use interface of the Alpine Dash Cam Viewer for PC and Mac allows you to easily view your recorded videos. Playback and download recorded videos along with your route history and speed recording and see, if any videos have been tagged by the camera with a recorded impact by another car (parking mode). You can also change the dash cam settings or format the memory card. You can download the Alpine Dash Cam Viewer from the support section below.

The "ALPINE DASH CAM PC Viewer" for PC / Mac is available for free on the Alpine website.



Dash Cam Link App

Download the Recording Viewer app from the Apple App Store or Google Play to check, download or delete recordings. You can also see a live view of your dash cam (very convenient when you install and setup your camera) on your Smartphone. Your phone will connect to the Dash Cam using Wi-Fi technology.

DVR-F220

Dash Cam with Driver Assistance Functions



ALPINE DASH CAM

Accessories

RVX-100

Camera Extension Hub (4-Channels)



Features

- Allows connection of up to 4 accessory cameras to the DVR-F790 & DVR-F220
- All accessory cameras record in 1080p Full HD video quality
- 1x AV-out (for front camera connection)
- Power Source: DC 12 V ~ 24 V,
- Cable length: 3 m
- Cable length to connecting connector: 15 cm
- Recording channel: up to 4 analog Full HD cameras can be input
- Composite video: Full HD (1920 x 1080)
- Frame rate: 30 fps
- Dimensions (W x D x H): 65 x 65 x 17,5 mm
- Weight: 40 g
- Compatible with the Alpine DVR-F790 & DVR-F220

RVC-R790

Interior Rear Camera



Features

- 1080p Full HD video quality ensures every detail is captured
- The footage from the rear view camera can be viewed simultaneously with front view videos on the viewing software
- Rear camera cable included (7,5 m)
- Resolution: Full HD (1920 x 1080)
- Camera: CMOS 2,12 MP, frame rate: 30 fps
- Viewing Angle: 140° (Diagonal)
- Dimensions (W x D x H): 92 x 53,3 x 29,7 mm
- Cable length: 7,5 m
- Compatible with the Alpine DVR-F790 & DVR-F220

DVR-F220

Dash Cam with Driver Assistance Functions



ALPINE DASH CAM

Accessories

RVC-S790

Exterior Side Camera

Features

- Clear video recording captures footage in high-quality 1080p Full HD video resolution
- Waterproof and dust-proof: rugged IP68 rated body that is both waterproof and dust-proof
- The exterior side view camera can be added to the camera hub accessory as part of a multichannel recording system and provide additional coverage where desired.
- Resolution: Full HD (1920 x 1080)
- Camera: 2,12 MP, frame rate: 30 fps
- Viewing angle: 129° (diagonal)
- Input power source: DC 5 V
- Current consumption: 140 mA
- Dimensions (W x D x H): 61,05 x 30,5 x 25,0 mm
- Weight: 57 g
- Cable length: 1,5 + 3,0 m
- Compatible with Alpine RVX-100



RVC-I790IR

Interior Infrared Camera

Features

- 1080p Full HD with infrared lights for clear day and night recording quality with colored image during the day and Infrared at night.
- The interior infrared camera can be added to the camera hub accessory RVX-100 as part of a multichannel recording system.
- Resolution: Full HD (1920 x 1080)
- Camera: 2,12 MP, frame rate: 30 fps
- Viewing Angle: 160° (diagonal)
- Dimensions (W x D x H): 61,1 x 30,5 x 32,3 mm
- Weight: 25,5 g
- Cable length: 50 cm
- Compatible with the Alpine DVR-F790 & DVR-F220



DVR-F220

Dash Cam with Driver Assistance Functions



ALPINE DASH CAM

Accessories

RVC-E790IR

Exterior Infrared Camera



Features

- Clear video recording captures footage in high-quality 1080p Full HD video resolution
- Waterproof and dust-proof: rugged IP68 rated body that is both waterproof and dust-proof
- Capture clear and detailed footage even at night time: the built-in infrared light (IR wavelength 940 nm) illuminates the immediate surrounding and allows the camera to record details that are invisible to the human eye in dark conditions.
- Resolution: Full HD (1920 x 1080)
- Camera: 2,12 MP, frame rate: 30 fps
- IR wavelength: 940 nm
- IR Intensity: 150 mW/sr @700 mA
- Viewing Angle: 126° (diagonal)
- Current consumption: 208 mA (IR on), 166 mA (IR off)
- Dimensions (W x D x H): 53,2 x 43,1 x 51,3 mm
- Weight: 106 g
- Cable length: 2 m + 20 m
- Compatible with Alpine RVX-100

DVM-64SD

Micro SD Card 64 GB



Features

- Minimum data transfer speed of 10 MB/s
- Moves data with high transfer speeds
- For Full HD video recording, HD still image and continuous shooting applied
- Operational temperature range of -10 to 60°C
- Capacity: 64 GB
- Includes micro SD to SD card adapter
- Compatible with Alpine DVR-F790 & DVR-F220

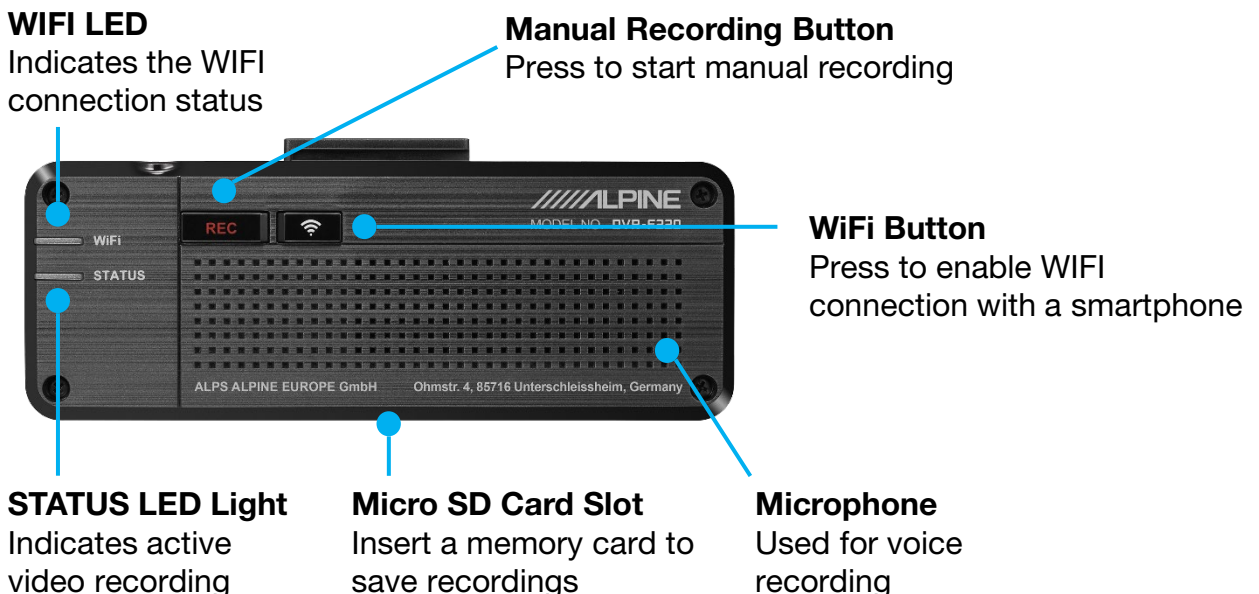
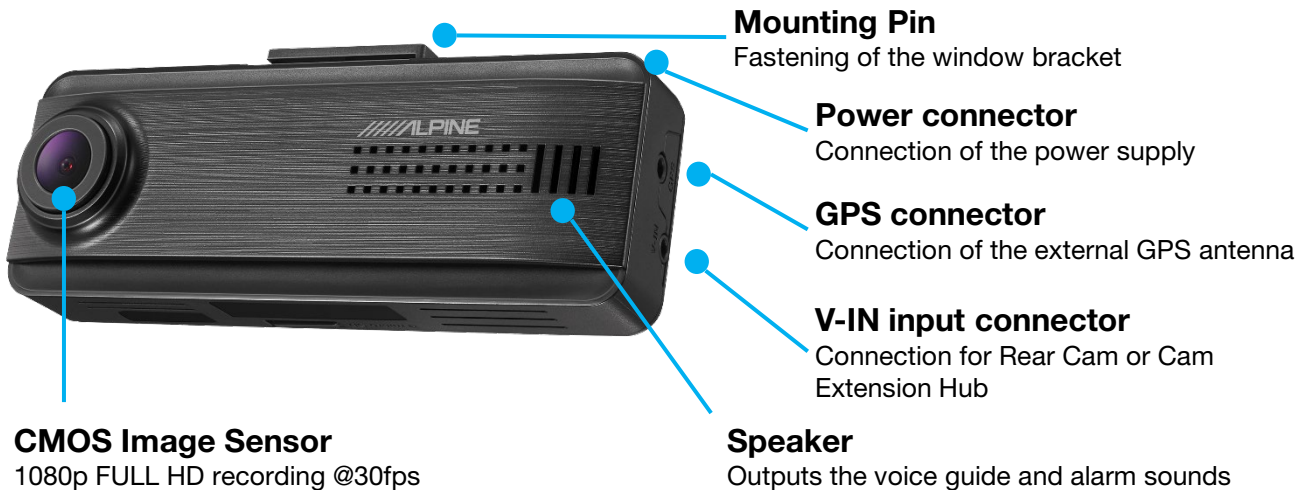
DVR-F220

Dash Cam with Driver Assistance Functions



ALPINE DASH CAM

Overview



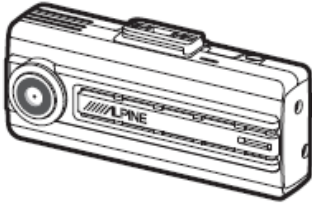
DVR-F220

Dash Cam with Driver Assistance Functions

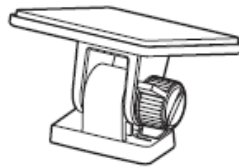


ALPINE DASH CAM

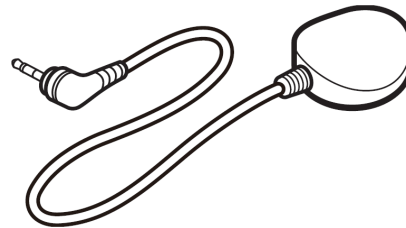
Included Items



Front camera



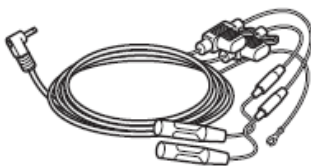
Mounting bracket



External GPS antenna



Cable clamp holder



Hardwiring cable



Car charger



Quick start guide / User guide
(stored in the microSD card)



microSD card
with adapter