



ELECTRONIC MELODY

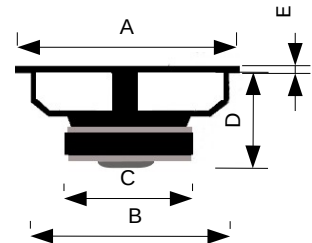


MCZ5



Coassiale 5" - 4Ω
Membrana in cellulosa smorzata
Tweeter in neodimio

Dimensioni



A	130	mm
B	112	mm
C	71	mm
D	48	mm
E	4	mm

Potenza Max	100	W	Qms	4,20	
Potenza RMS	50	W	Qes	2,14	
Ø Foro Pannello	112	mm	Qts	1,42	
Sensibilità (1W/1m)	91	dB	Mms	7,13	g
Impedenza Nominale	4	Ω	Cms	0,27	mm/N
Ø Bobina Mobile	25	mm	Vas	2,29	l
D	100	mm	Bxl	2,87	Wb/m
Re	3,40	Ω	L1K	0,43	mH
Fs	115,48	Hz	L10K	0,07	mH

MCZ5

